

**LOS ANGELES COUNTY
DEPARTMENT OF PUBLIC WORKS**

BENCH MARK LIST



**FAIRFAX QUAD
(WEST HOLLYWOOD)**

1993 ADJUSTMENT

PREFACE

The Department of Public Works level net is composed of more than 1,700 miles of levels supporting in excess of 9,000 bench marks. Previously when a major readjustment of the net was undertaken, to emphasize the complete break with previous elevations, the CY, CG, & CL, series bench marks were re-labeled DY, DG, & DL, respectively.

Beginning in 1993 the baseline readjustment year will be indicated on baseline BM,s only indicated below (*). Henceforth all BM numbers will be labeled as a Y, G, or L, series that will no longer indicate the major adjustment year.

To facilitate the adjustment, indexing and distribution of adjusted values of the net, the county territory was divided into 33 quads or areas. For the identification purposes each quad was given a name, viz., "Rosemead," "La Mirada," "Santa Fe," etc. When bench marks and elevations in these quads are used, the name must be included in the bench mark description, e.g.,

* BASELINE 295.461 L&BR IN CTR OF CB RET @ NE COR Y 9191
(1990) LA HABRA BLVD & VALLEY HOME AVE
35FT N & 35FT E/O C/L INT

It is expected that this general adjustment will for the most part remain sound for 8 to 12 years. Updating constrained adjustments will continue in the future. When a quad is readjusted, new elevations will be published and the date of readjustment will be noted in the bench mark description. Two bench marks with different adjustment dates will not normally agree with each other.

The basic accuracy of the net is reflected by an indicated field probable error of plus or minus 0.012 foot per mile of leveling as determined from the conditions of closure. However, many years of experience in vertical control in the greater Los Angeles basin and Antelope Valley indicate that because of varying degrees of subsidence and heaving, the true datum is recovered only by obtaining substantial agreement of a number of bench marks.

The users of this net are invited to assist in its maintenance by notifying this department of cases of obliteration, apparent mistakes in description or elevations, and proven disturbance of bench marks.

=====

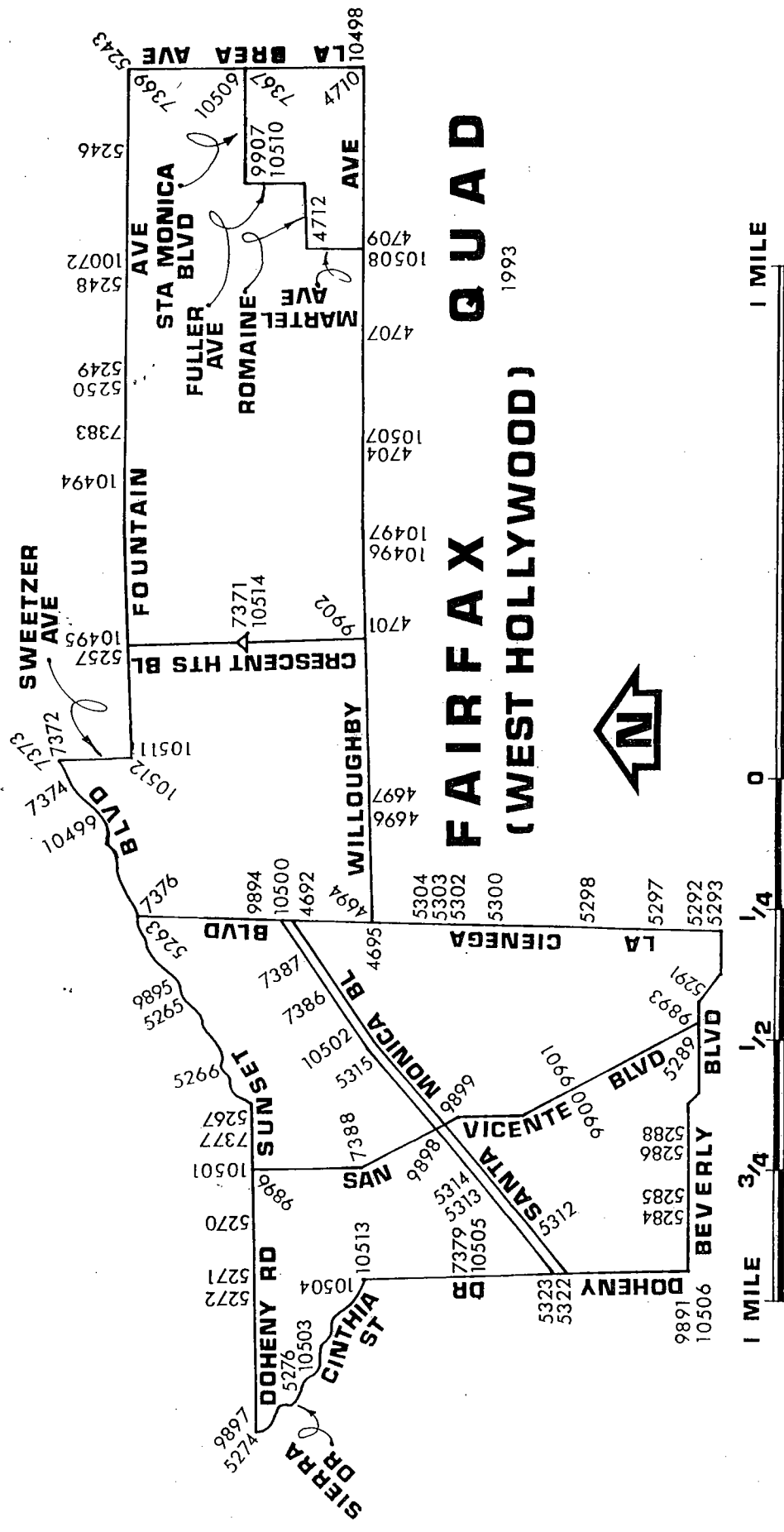
DATUM: U.S. Coast and Geodetic Survey Sea Level Datum
of 1929, through the medium of the Los Angeles
County Engineer Precise Level Net.

ABBREVIATIONS USED IN BENCH MARK LISTINGS

ABUT -----	Abutment	ECR -----	End of Curb Return
ALG -----	Along	EC -----	End of Curve
ANG PT -----	Angle Point	ENT -----	Entrance
B/W -----	Back of Walk	FL -----	Floor
BCR -----	Beginning of Curb Return	FTG -----	Footing
BC -----	Beginning of Curve	FRWY -----	Freeway
BLDG -----	Building	F/W -----	Front of Walk
BM -----	Bench Mark	GAR -----	Garage
BT SPK -----	Boat or Bolt Spike	HDWL -----	Headwall
BR CAP -----	Brass or Bronze Cap	HSE -----	House
C B -----	Catch Basin	HWY -----	Highway
CTR -----	Center	INT -----	Intersection
C/L -----	Center Line	IP -----	Iron Pipe
C/L INT -----	Center Line Intersection	LT -----	Left
C/L PROD -----	Center Line Produced	LACE -----	L.A. City Engineer
CONC -----	Concrete	LACS -----	L.A. Co. Engineer
COR -----	Corner	LAFC -----	L.A. Co. Flood Control
COE -----	Corps of Engineers	L&BN -----	Lead and Bench Nail
CULV -----	Culvert	L&BR -----	Lead and Brad
CYN -----	Canyon	L&N -----	Lead and Nail
CB -----	Curb	L&SPK -----	Lead and Spike
CS MON -----	Co. Eng. Monument	L&T -----	Lead and Tack
CT SPK -----	Cut Spike	MCR -----	Middle of Curb Return
DPW -----	Dept. of Public Works	MKD -----	Marked
DR -----	Drive or Driveway	MC -----	Middle of Curve
E/O -----	East of	MON -----	Monument

ABBREVIATIONS USED IN BENCH MARKS (CON'T)

N/O ----- North of
NR ----- Near
OPP ----- Opposite
PI ----- Point of Intersection
PK&W ----- PK Nail and Washer
P/L ----- Property Line
POST ----- Point of Semi-Tangent
PP ----- Power Pole
PVMT ----- Pavement
PROD ----- Produced
RD ----- Road
RDBM ----- Road Dept. Bench Mark
RDBM TAG ----- Road Dept. Bench Mark Tag
RR ----- Railroad
RT ----- Right
R/W ----- Right of Way
SDMH ----- Storm Drain Manhole
SMH ----- Sewer Manhole
SPK ----- Spike
ST&W ----- Spike Tin and Washer
S/O ----- South of
TP ----- Telephone Pole
USC&GS ----- U.S. Coast and Geodetic Survey
USGS ----- U.S. Geological Survey
WK ----- Walk
W/O ----- West of



JAD-YEAR	ELEV	DESCRIPTION (INCLUDE QUAD AND YEAR IN DESCRIPTION)	BM NUMBER
FAIRFAX (1993)	0228.146	LA CITY SUR MON IN WELL 12IN DN ON C/L LA CIENEGA BLVD & 66FT N/O C/L ROMAINE ST MKD (C-2A RESET 1970)	Y 4692
FAIRFAX (1993)	0203.487	FLAT HD SPK IN E CB 6FT N/O BCR 33FT E/O C/L LA CIENEGA BLVD & 35FT N/O C/L WILLOUGHBY AVE	Y 4694
FAIRFAX (1993)	0202.842	WIRE SPK S CB 15FT E/O BCR @ SE COR WILLOUGHBY AVE & LA CIENEGA BLVD 60FT E & 15FT S/O C/L INT	Y 4695
FAIRFAX (1993)	0213.191	L&T IN W CB 4FT N/O BCR @ NW COR WILLOUGHBY AVE & ORLANDO AVE 24FT N & 18FT W/O C/L INT	Y 4696
FAIRFAX (1993)	0212.349	WIRE SPK IN CB 4FT S/O BCR @ SE COR ORLANDO AVE & WILLOUGHBY AVE 30FT S & 21FT E/O C/L INT	Y 4697
FAIRFAX (1993)	0238.453	L&BN IN S CB 15FT E/O BCR @ SE COR WILLOUGHBY AVE & CRESCENT HEIGHTS BLVD 50FT E & 15FT S/O C/L INT	Y 4701
FAIRFAX (1993)	0258.572	L&T IN W CB 3FT N/O BCR 30FT N/O C/L WILLOUGHBY AVE & 15FT W/O C/L GENESEE AVE	Y 4704
FAIRFAX (1993)	0261.187	WIRE SPK IN N CB 6FT E/O BCR @ NE COR SIERRA BONITA AVE & WILLOUGHBY AVE 33FT E & 15FT N/O C/L INT	Y 4707
FAIRFAX (1993)	0257.167	WIRE SPK IN E CB 4FT S/O BCR @ SE COR MARTEL AVE & WILLOUGHBY AVE 35FT S & 15FT E/O C/L INT	Y 4709
FAIRFAX (1993)	0268.723	WIRE SPK IN W CB @ NW COR WILLOUGHBY AVE & LA BREA AVE 50FT N & 40FT W/O C/L INT	Y 4710
FAIRFAX (1993)	0272.713	WIRE SPK IN W CB MARTEL AVE @ C/L PROD ROMAINE ST (FROM THE E)	Y 4712
FAIRFAX (1993)	0309.809	STD TRAVERSE MON @ C/L LA BREA AVE 15FT N/O FOUNTAIN AVE MKD (HWD G1C)	Y 5243
FAIRFAX (1993)	0311.403	RD BM TAG IN W CB @ NW COR ALTA VISTA BLVD & FOUNTAIN AVE 95FT N & 20FT W/O C/L INT	Y 5246
FAIRFAX (1993)	0318.363	RD BM TAG IN W CB @ NW COR VISTA ST & FOUNTAIN AVE 135FT N & 16FT W/O C/L INT	Y 5248
FAIRFAX (1993)	0329.769	RD BM TAG IN E CB @ NE COR FOUNTAIN AVE & CURSON AVE 150FT N & 14FT E/O C/L INT	Y 5249
FAIRFAX (1993)	0329.777	RD BM TAG IN W CB @ NW COR FOUNTAIN AVE & CURSON AVE 150FT N & 14FT W/O C/L INT	Y 5250

JAD-YEAR	ELEV	DESCRIPTION (INCLUDE QUAD AND YEAR IN DESCRIPTION)	BM NUMBER
FAIRFAX (1993)	0340.538	RD BM TAG IN W CB @ SW COR FOUNTAIN AVE & CRESCENT HEIGHTS BLVD 65FT S & 32FT W/O C/L INT	Y 5257
FAIRFAX (1993)	0409.558	CUT SPK IN S CB @ E END C B 2FT W/O BCR MILLER DR & 126FT W/O C/L PROD LA CIENEGA BLVD	Y 5263
FAIRFAX (1993)	0384.645	L&BN IN W CB @ N END C B 30FT W/O C/L SUNSET PLAZA DR & 100FT N/O C/L SUNSET BLVD	Y 5265
FAIRFAX (1993)	0360.080	CUT SPK IN N CB SUNSET BLVD 33FT E/O E CB SHERBOURN DR @ W END C B 34FT N & 43FT W/O C/L INT	Y 5266
FAIRFAX (1993)	0343.046	CUT SPK IN N CB SUNSET BLVD 27FT W/O W CB HORN AVE @ E END C B 34FT N & 43FT W/O C/L INT	Y 5267
FAIRFAX (1993)	0376.059	WIRE SPK IN E CB HILLDALE AVE 25FT N/O N CB SUNSET BLVD @ S END C B 60FT N & 17FT E/O C/L C/L INT	Y 5270
FAIRFAX (1993)	0411.083	CUT SPK IN W CB DOHENY DR 60FT N/O N P/L SUNSET BLVD @ S END C B 106FT N & 20FT W/O C/L INT	Y 5271
FAIRFAX (1993)	0406.353	CUT SPK IN N CB 5FT W/O BCR @ NW COR SUNSET BLVD & DOHENY DR 47FT W & 35FT N/O C/L INT MKD (BM)	Y 5272
FAIRFAX (1993)	0455.640	L&BR NR CTR CURVE @ SW COR DOHENY RD & SIERRA PL 33FT S & 35FT W/O C/L INT	Y 5274
FAIRFAX (1993)	0399.190	CUT SPK IN N CB SUNSET BLVD 42FT N/O C/L & 202 FT E/O C/L SIERRA DR (TO THE N) @ SW END C B	Y 5276
FAIRFAX (1993)	0199.255	SPK&W IN E CB @ SE COR WETHERLY DR & BEVERLY BLVD 15FT E & 70FT S/O C/L INT (10FT S/O BCR)	Y 5284
FAIRFAX (1993)	0193.684	L&N IN N CB @ BCR @ NW COR BEVERLY BLVD & ALMONT DR 35FT N & 35FT W/O C/L INT MKD (BM)	Y 5285
FAIRFAX (1993)	0184.975	WIRE SPK IN S CB BEVERLY BLVD 17FT W/O W P/L SWALL DR @ E END C B 35FT S & 45FT W/O C/L INT	Y 5286
FAIRFAX (1993)	0181.536	LACE HEX MON IN WELL 8IN DN @ C/L BEVERLY BLVD & 143FT E/O C/L SWALL DR	Y 5288
FAIRFAX (1993)	0167.875	LACE HEX MON IN WELL 8IN DN ON C/L BEVERLY BLVD 250FT W/O W CB LINE SHERBOURNE DR & 265FT W/O C/L INT (LA 13 14750)	Y 5289

JAD-YEAR	ELEV	DESCRIPTION (INCLUDE QUAD AND YEAR IN DESCRIPTION)	BM NUMBER
FAIRFAX (1993)	0163.326	CUT SPK IN SE COR C B 4FT E/O E CB HUNTLY DR 3FT N/O N P/L BEVERLY PL 30FT N & 19FT E/O C/L INT	Y 5291
FAIRFAX (1993)	0162.493	WIRE SPK IN N CB 1FT W/O C B @ NE COR BEVERLY BLVD & LA CIENEGA BLVD 18FT E/O E P/L (LA CIENEGA BLVD)	Y 5292
FAIRFAX (1993)	0161.235	LA CITY MON IN WELL 10IN DN @ C/L INT BEVERLY BLVD & LA CIENEGA BLVD MKD (HOLLYWOOD C-3A 1948)	Y 5293
FAIRFAX (1993)	0168.454	CUT SPK IN SE COR C B 4FT E/O E CB LA CIENEGA BLVD 5FT N/O N P/L OAKWOOD ST 38FT E & 30FT N/O C/L INT	Y 5297
FAIRFAX (1993)	0174.557	WIRE SPK IN S CB ROSEWOOD AVE 5FT E/O E P/L LA CIENEGA BLVD @ E END C B 15FT S & 56FT E/O C/L INT MKD (BM)	Y 5298
FAIRFAX (1993)	0176.618	USC&GS MON FLUSH 1FT W/O W LA CIENEGA BLVD 250FT S/O S CB MELROSE AVE MKD (USC&GS BM J-775 1945)	Y 5300
FAIRFAX (1993)	0185.635	LA CITY MON IN WELL 18IN DN @ C/L INT LA CIENEGA BLVD & MELROSE PL MKD (C-2B RESET 1970)	Y 5302
FAIRFAX (1993)	0187.016	CUT SPK IN NW COR C B 4FT N/O N CB MELROSE PL & 3FT E/O E P/L LA CIENEGA BLVD 28FT N & 51FT E/O C/L INT	Y 5303
FAIRFAX (1993)	0193.139	WIRE SPK IN E CB LA CIENEGA BLVD 9FT N/O N P/L WARING AVE @ S END C B 36FT N & 34FT E/O C/L INT MKD (BM)	Y 5304
FAIRFAX (1993)	0224.525	USC&GS DISC 2FT N/O N CB SANTA MONICA BLVD 1FT E/O BCR @ NW COR NEMO ST MKD (T733-1945)	Y 5312
FAIRFAX (1993)	0224.640	USC&GS DISC IN CONC POST 2FT N/O N CB SANTA MONICA BLVD 271FT W/O W CB ROBERTSON BLVD MKD (U 7331945)	Y 5313
FAIRFAX (1993)	0221.249	CUT SPK IN N CB SANTA MONICA BLVD 11FT W/O W P/L HILLDALE AVE @ E END C B 36FT W & 20FT N/O N/O C/L INT (N BARREL)	Y 5314
FAIRFAX (1993)	0211.449	SQ HD SPK IN N CB 1FT E/O BCR @ NE COR SANTA MONICA BLVD & PALM AVE MKD (N BARREL) & 56FT E/O C/L INT MKD (BM)	Y 5315

JAD-YEAR	ELEV	DESCRIPTION (INCLUDE QUAD AND YEAR IN DESCRIPTION)	BM NUMBER
FAIRFAX (1993)	0226.663	CUT SPK N CB SANTA MONICA BLVD MIDWAY BETWEEN DOHENY DR & OAKHURST DR @ E END C B 47FT N/O (N BARREL) SANTA MONICA BLVD & 83FT W/O DOHENY DR	Y 5322
FAIRFAX (1993)	0225.822	CS MON IN WELL 12IN DN 3FT E/O C/L DOHENY DR & 20FT N/O C/L SANTA MONICA BLVD (N BARREL) MKD (RE 5869) USE W EDGE	Y 5323
FAIRFAX (1993)	0286.378	L&BN IN S CB 2FT W/O C B @ SE COR SANTA MONICA BLVD & LA BREA AVE 53FT E & 2FT S/O C/L INT	Y 7367
FAIRFAX (1993)	0309.318	L&BN IN S CB FOUNTAIN AVE 10FT W/O BCR @ SW COR LA BREA AVE & FOUNTAIN AVE 27FT S & 60FT W/O C/L INT	Y 7369
FAIRFAX (1993)	0275.960	SUR MON 14IN DN ON C/L HAVENHURST DR PROD FROM THE S 2FT N/O C/L SANTA MONICA BLVD MKD (HOLLYWOOD E-2-A)	Y 7371
FAIRFAX (1993)	0388.452	CS BRASS CAP MON IN NW COR OF C B @ NE COR SUNSET BLVD & SWEETZER AVE 36FT N & 25FT E/O C/L INT MKD (BM 62-6)	Y 7372
FAIRFAX (1993)	0388.522	WIRE SPK IN N CB SUNSET BLVD @ E END C B 25FT E/O E CB LN SWEETZER AVE 35FT E & 30FT N C/L INT	Y 7373
FAIRFAX (1993)	0387.411	WIRE SPK IN N CB SUNSET BLVD 5FT W/O BCR @ NW COR SUNSET BLVD & SWEETZER AVE 30FT N & 32FT W/O C/L INT	Y 7374
FAIRFAX (1993)	0404.890	L&BN IN S CB 10FT E/O BCR @ SE COR SUNSET BLVD & LA CIENEGA BLVD 45FT E & 33FT S/O C/L INT	Y 7376
FAIRFAX (1993)	0343.476	USGS BR DISC FL BK OF WK @ ENT TO BLDG #8820 SUNSET BLVD 79FT W/O W CB LINE OF HORN ST PROD 48FT S/O C/L SUNSET BLVD MKD (6-1922)	Y 7377
FAIRFAX (1993)	0262.761	WIRE SPK IN E CB DOHENY DR 2FT S/O BCR @ SE COR ELEVADO AVE 20FT E & 22FT S/O C/L INT	Y 7379
FAIRFAX (1993)	0334.177	L&BN IN E CB 9FT N/O C B @ NE COR FOUNTAIN AVE & SPAULDING AVE 93FT N & 17FT E/O C/L INT	Y 7383
FAIRFAX (1993)	0217.339	USC&GS BR DISC IN E CB WESTBOURNE DR 16FT N/O BCR @ NE COR SANTA MONICA BLVD 11FT N & 23FT E/O C/L INT MKD (W 773 RESE 1952)	Y 7386

JAD-YEAR	ELEV	DESCRIPTION (INCLUDE QUAD AND YEAR IN DESCRIPTION)	BM NUMBER
FAIRFAX (1993)	0238.185	USC&GS BR DISC IN E CB 5FT N/O BCR @ NE COR SANTA MONICA BLVD (N BARRILL & WEST KNOLL DR 35FT N & 15FT E/O C/L INT MKD (X 773 RESET 1962)	Y 7387
FAIRFAX (1993)	0275.821	L&T IN N CB @ NW COR CYNTHIA ST & SAN VICENTE BLVD 95FT W & 18FT N/O C/L INT (20FT W/O BCR)	Y 7388
FAIRFAX (1993)	0208.457	L&N IN W CB 3FT N/O BCR @ NW COR DOHENY DR & BEVERLY BLVD 55FT N & 24FT W/O C/L INT	Y 9891
FAIRFAX (1993)	0167.311	WIRE SPK IN N CB BEVERLY BLVD 4FT W/O BCR @ NW COR SHERBOURNE DR @ E END C B 35FT N & 93FT W/O C/L INT (LA 13-14740)	Y 9893
FAIRFAX (1993)	0242.376	WIRE SPK IN CB 1FT W/O W CB LA CIENEGA BLVD 75FT N/O N P/L SANTA MONICA BLVD @ S END C B 152FT N & 32FT W/O C/L INT	Y 9894
FAIRFAX (1993)	0381.958	RD BM TAG IN N CB SUNSET BLVD 1FT E/O BCR @ NE COR 82FT E C/L SUNSET PLAZA DR & 42FT N/O C/L SUNSET BLVD	Y 9895
FAIRFAX (1993)	0355.153	L&T E CB 7FT S/O BCR @ SE COR SUNSET BLVD & SAN VICENTE BLVD 50FT E & 67FT S/O C/L INT MKD (BM)	Y 9896
FAIRFAX (1993)	0450.709	RD BM TAG IN S CB 1FT E/O BCR @ SE COR DOHENY DR & SIERRA PL 21FT S/O & 80FT E/O C/L INT	Y 9897
FAIRFAX (1993)	0218.962	L&BN IN N CB 13FT W/O BCR @ NW COR SANTA MONICA BLVD & SAN VICENTE BLVD 67FT W & 54FT N/O C/L INT	Y 9898
FAIRFAX (1993)	0214.826	L&SPK IN E CB 5FT S/O BCR @ SE COR SANTA MONICA BLVD & SAN VICENTE BLVD 79FT S & 50FT E/O C/L INT	Y 9899
FAIRFAX (1993)	0177.407	RD BM TAG IN W CB BCR @ S END C B @ NW COR SAN VICENTE BLVD & MELROSE AVE 46FT W & 69FT N/O C/L INT	Y 9900
FAIRFAX (1993)	0175.127	LACE TAG IN S CB 4FT E/O BCR @ SE COR SAN VICENTE BLVD & MELROSE AVE 34FT S & 61FT E/O C/L INT	Y 9901
FAIRFAX (1993)	0240.543	L&SPK IN E CB 10FT N/O BCR @ NE COR WILLOUGHBY AVE & CRESCENT HGTS BLVD 46FT N & 22FT E/O C/L INT	Y 9902

JAD-YEAR	ELEV	DESCRIPTION (INCLUDE QUAD AND YEAR IN DESCRIPTION)	BM NUMBER
FAIRFAX (1993)	0282.213	LA CITY BR CAP MON IN SW COR B 33FT S/O C/L SANTA MONICA BLVD & 16FT W/O C/L PROD FULLER AVE MKD (PBM-1970 13-15372)	Y 9907
FAIRFAX (1993)	0314.370	BT SPK IN CB 5FT E/O BCR @ SE COR FOUNTAIN AVE & VISTA ST 40FT E & 30FT S/O C/L INT	Y 10072
FAIRFAX (1993)	0335.150	L&SPK IN E CB @ NE COR FOUNTAIN AVE & GENESSE AVE 57FT N & 17FT E/O C/L INT (N END CB)	Y 10494
FAIRFAX (1993)	0347.156	DPW BM TAG IN E CB @ NE COR CRESCENT HEIGHTS BLVD & FOUNTAIN AVE 60FT N & 35FT E/O C/L INT (N END C B)	Y 10495
FAIRFAX (1993)	0253.840	L&SPK IN E CB 10FT W/O BCR @ SW COR FAIRFAX AVE & WILLOUGHBY AVE 76FT W & 15FT S/O C/L INT	Y 10496
FAIRFAX (1993)	0255.684	LA CITY BR CAP MON 27FT N/O BCR @ NW COR WILLOUGHBY AVE & FAIRFAX AVE 65FT N & 48FT W/O C/L INT MKD (PBM 1970 13-15372) 2FT W/O CB	Y 10497
FAIRFAX (1993)	0269.049	DPW BM TAG IN N CB 1FT E/O BCR @ NE COR LA BREA AVE & WILLOUGHBY AVE 50FT E & 20FT N/O C/L INT	Y 10498
FAIRFAX (1993)	0390.470	DPW BM TAG IN NLY CB SUNSET BLVD 18FT NLY/O BCR @ NW COR SUNSET BLVD & KING RD 53FT NLY & 30FT WLY/O C/L INT	Y 10499
FAIRFAX (1993)	0241.354	DPW BM TAG IN E CB 5FT N/O BCR @ NE COR SANTA MONICA BLVD (N BARREL) & LA CIENEGA BLVD 95FT N & 31FT E/O C/L INT	Y 10500
FAIRFAX (1993)	0361.706	DPW BM TAG IN ELY CB 5FT NLY/O BCR @ NE COR SUNSET BLVD & CLARK ST 58FT NLY & 18FT ELY/O C/L INT	Y 10501
FAIRFAX (1993)	0210.427	DPW BM TAG IN CB 18FT E/O BCR @ NE COR SANTA MONICA BLVD (N BARREL) & HANCOCK AVE 63FT E & 16FT N/O C/L INT	Y 10502
FAIRFAX (1993)	0396.651	DPW BM TAG IN S CB 10FT E/O BCR @ SE COR SUNSET BLVD & SIERRA DR 211FT E & 42FT S/O C/L INT	Y 10503
FAIRFAX (1993)	0308.436	DPW BM TAG IN S CB 18FT W/O BCR @ SW COR DOHENY DR & CINTHIA ST 74FT W & 17FT S/O C/L INT	Y 10504
FAIRFAX (1993)	0255.491	DPW BM TAG IN E CB 2FT N/O BCR @ NE COR DOHENY DR & LLOYD PL 30FT N & 24FT E/O C/L INT	Y 10505

JAD-YEAR	ELEV	D E S C R I P T I O N (INCLUDE QUAD AND YEAR IN DESCRIPTION)	BM NUMBER
FAIRFAX (1993)	0207.597	DPW BM TAG IN S CB 1FT E/O BCR @ SE COR DOHENY DR & BEVERLY BLVD 50FT E & 35FT S/O C/L INT	Y 10506
FAIRFAX (1993)	0258.562	WIRE SPK IN E CB @ NE COR WILLOUGHBY AVE & GENESSE AVE 24FT N & 15FT E/O C/L INT	Y 10507
FAIRFAX (1993)	0258.179	DPW BM TAG IN CB 3FT N/O BCR @ NE COR MARTEL AVE & WILLOUGHBY AVE 33FT N & 15FT E/O C/L INT	Y 10508
FAIRFAX (1993)	0286.515	DPW BM TAG IN CB @ NE COR LA BREA AVE & SANTA MONICA BLVD 74FT N & 34FT E/O C/L INT (30FT N/O BCR)	Y 10509
FAIRFAX (1993)	0281.417	DPW BM TAG IN CB @ SE COR SANTA MONICA BLVD & FULLER AVE (TO THE E) 42FT S & 18FT E/O C/L INT (1FT S/O BCR)	Y 10510
FAIRFAX (1993)	0315.121	DPW BM TAG IN S CB @ SE COR FOUNTAIN AVE & SWEETZER AVE 44FT E & 28FT S/O C/L INT	Y 10511
FAIRFAX (1993)	0316.168	DPW BM TAG IN W CB 9FT N/O BCR @ NW COR FOUNTAIN AVE & SWEETZER AVE 48FT N & 18FT S/O C/L INT	Y 10512
FAIRFAX (1993)	0312.575	L&SPK IN SE COR C B 7FT N/O BCR @ NW COR DOHENY DR & CINTHIA ST 62FT N & 25FT W/O C/L INT (1FT W/O CURB FACE)	Y 10513
FAIRFAX (1993)	0277.105	DPW BM TAG IN S CB 15FT E/O BCR @ SE COR SANTA MONICA BLVD & HAVENHURST DR 35FT E & 30FT S/O C/L INT	Y 10514